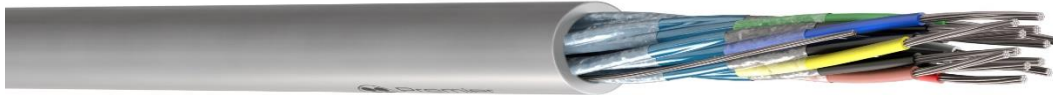


8778eQ



Generally, to Belden 8778



Application

22awg multi-pair screened cable for post-production and audio applications.

Construction

Conductor	Class 2 stranded tinned copper conductor
AWG	22(7)
pairs	9
Insulation	PP Polypropylene
Screen	Aluminium foil
Drain Wire	Tinned copper
Sheath	PVC (Polyvinyl Chloride)
Voltage	300v
Temperature Rating	Fixed: -20°C to +80°C
Sheath Colour	Grey
Nominal O/D mm	8.9
Min Bed Radius	10 x O/D
Nominal weight kg/km	104

Core Identification

Pair 1 Black/Red
 Pair 2 Black/White
 Pair 3 Black/Green
 Pair 4 Black/Blue
 Pair 5 Black/Yellow
 Pair 6 Black/Brown

Capacitance Conductor to Conductor ohms/km	inductance µH/m	Impedance ohms	Max Resistance Conductor @ 20°C ohms/km
98.4	0.59	50	49.2

The information contained within this data sheet is for guidance only.
 Cable and gland sizes are nominal and may vary according to different manufacturer's tolerances.
 Every possible effort is made to ensure that the Information contained in this data sheet is correct.
 However, we reserve the right to change the information or specification at any time in the light of technical developments or revisions.
 References to or extracts from British Standards, current IEE regulations or other regulatory bodies should be verified with these organisations.